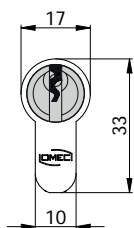
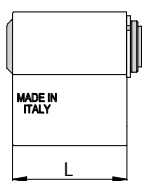


COMPONENTI PER CILINDRI

MODULO VUOTO PER CILINDRO - SERIE 120M

CARATTERISTICHE COSTRUTTIVE:

Corpo in alluminio ad alta resistenza - Barilotto in ottone nichelato con guida-chiave.



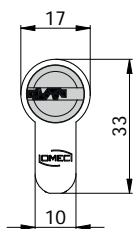
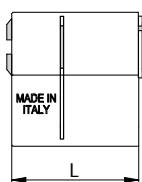
Per cilindri serie 120M

COD.	L	kg		
CCH985	30	0,040	10	-
CCN985	Finitura Nera			

MODULO VUOTO PER CILINDRO - SERIE 220M

CARATTERISTICHE COSTRUTTIVE:

Corpo in alluminio ad alta resistenza con taglio per spezzamento controllato - Barilotto in ottone nichelato con guida-chiave.



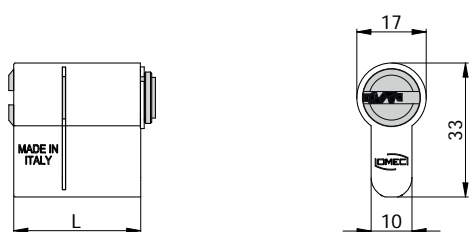
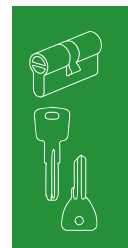
Per cilindri serie 220M

COD.	L	kg		
CCH986	35	0,050	10	-
CCN986	Finitura Nera			

MODULO VUOTO PER CILINDRO - SERIE 320M

CARATTERISTICHE COSTRUTTIVE:

Corpo in alluminio ad alta resistenza con taglio per spezzamento controllato - Barilotto in ottone nichelato con guida-chiave.



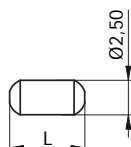
Per cilindri serie 320M

COD.	L			
CCH991	25	0,040	10	-
CCN991	Finitura Nera			



PERNI DI CIFRATURA - SERIE 140 - 240

CARATTERISTICHE COSTRUTTIVE:

Perni in acciaio inox.



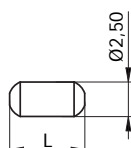
Per cilindri serie 140 - 240

COD.	L	kg		
PRC020	3,45	0,00012	1000	-
PRC021	3,95	0,00014	1000	-
PRC022	4,45	0,00016	1000	-
PRC023	4,95	0,00018	1000	-
PRC024	5,45	0,00020	1000	-



PERNI DI CIFRATURA - SERIE 120 - 220

CARATTERISTICHE COSTRUTTIVE:

Perni in acciaio inox.



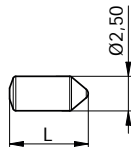
Per cilindri serie 120 - 220

COD.	L	kg		
PRC024	5,45	0,00020	1000	-
PRC025	5,95	0,00021	1000	-
PRC026	6,45	0,00023	1000	-
PRC027	6,95	0,00025	1000	-
PRC028	7,45	0,00027	1000	-
PRC059	5,15	0,00019	1000	-

PERNI DI CIFRATURA - SERIE 320M

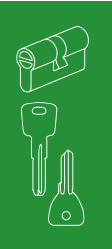
CARATTERISTICHE COSTRUTTIVE:

Perni in acciaio inox.



Per cilindri serie 320M

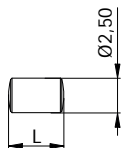
COD.	L	kg		
PRC082	4,90	0,00017	1000	-
PRC083	5,20	0,00018	1000	-
PRC084	5,70	0,00020	1000	-
PRC085	6,20	0,00022	1000	-
PRC086	6,70	0,00024	1000	-
PRC087	7,20	0,00026	1000	-



CONTROPERNI - SERIE 140 - 240

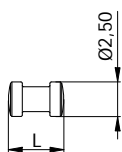
CARATTERISTICHE COSTRUTTIVE:

Controperni in acciaio inox.



Per cilindri serie 140 - 240

COD.	L	kg		
PRC002	4,00	0,00013	1000	-



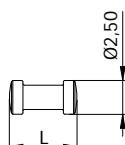
Per cilindri serie 140 - 240

COD.	L	kg		
PRC003	4,00	0,00016	1000	-

CONTROPERNI - SERIE 120 - 220 - 320M

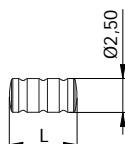
CARATTERISTICHE COSTRUTTIVE:

Controperni in acciaio inox.



Per cilindri serie 120 - 220 - 320M

COD.	L	kg		
PRC004	5,00	0,00016	1000	-



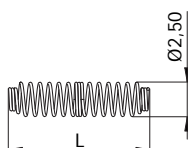
Per cilindri serie 120 - 220 - 320M

COD.	L	kg		
PRC005	5,00	0,00020	1000	-

MOLLA - SERIE 140 - 240

CARATTERISTICHE COSTRUTTIVE:

Molla in acciaio inox.



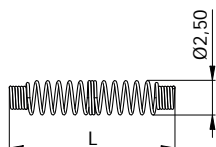
Per cilindri serie 140 - 240

COD.	L	kg		
MCL002	10,20	0,00003	1000	-

MOLLA - SERIE 120 - 220

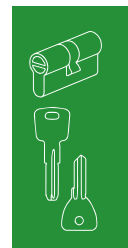
CARATTERISTICHE COSTRUTTIVE:

Molla in acciaio inox.



Per cilindri serie 120 - 220

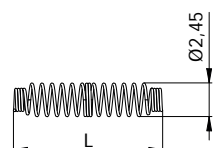
COD.	L	kg		
MCL014	12,00	0,00004	1000	-



MOLLA - SERIE 320M

CARATTERISTICHE COSTRUTTIVE:

Molla in acciaio inox.



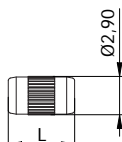
Per cilindri serie 320M

COD.	L	kg		
MCL008	10,80	0,00003	1000	-

TAPPO

CARATTERISTICHE COSTRUTTIVE:

Tappo in ottone.

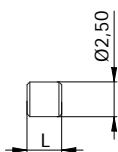


COD.	L	kg		
PRC006	5,00	0,00027	1000	-

PERNI PER SISTEMI MASTER KEY

CARATTERISTICHE COSTRUTTIVE:

Perni in ottone.

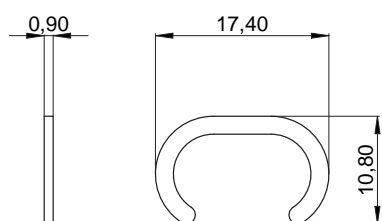


COD.	L	kg		
PRC015	0,50	0,00003	1000	-
PRC016	1,00	0,00006	1000	-
PRC017	1,50	0,00008	1000	-
PRC018	2,00	0,00010	1000	-
PRC019	2,50	0,00012	1000	-

SEGER - SERIE 140 - 240

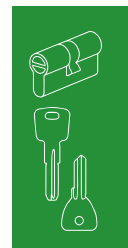
CARATTERISTICHE COSTRUTTIVE:

Seeger in acciaio ottonato.



Per cilindri serie 140 - 240

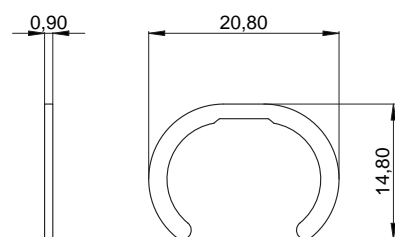
COD.	Kg		
RND021	0,00040	250	-



SEGER - SERIE 120 - 220

CARATTERISTICHE COSTRUTTIVE:

Seeger in acciaio ottonato.



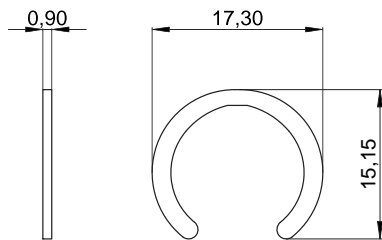
Per cilindri serie 120 - 220

COD.	Kg		
RND020	0,00055	250	-

SEGER - SERIE 320M

CARATTERISTICHE COSTRUTTIVE:

Seeger in acciaio inox.



Per cilindri serie 320M

COD.	kg		
RND036	0,00050	250	-